



INSTRUCTIONS

Giani Granite Countertop Kit - Covers 35 Sq. Feet

BEFORE USING GIANI:



WATCH OUR HOW-TO VIDEOS!

Visit gianigranite.com and select the "Videos" tab on the top menu bar. Watch our videos and read through all of the instructions prior to painting, as they are meant to help you create the countertops you've always wanted!



LIVE CHAT WITH US!

Have a question? We're here to help! Chat with us Mon. - Fri. 7a.m. to 4 p.m. CST on gianigranite.com. Just look for the chat bubble at the bottom righthand corner. You can also reach us by email at info@gianigranite.com

CAN BE USED ON:

- Formica
- Laminate
- Primed Plastic
- Wood*
- Cultured Marble*
- Real Granite**
- Corian*
- Backsplashes
- Fireplace Mantels
- Metal*
- Ceramic Tiles*
- Real Concrete**

* De-gloss with a very fine #600 grit sandpaper, then wipe clean with a damp cloth. For unsealed wood, apply a good wood primer before applying the Giani primer. Apply the wood primer with a foam roller for ultra-smooth finishes because thicker nap rollers will leave a textured finish.

** For granite and concrete that are fully cured, clean the surface with a xylene or lacquer thinner, and then wipe-up with rubbing alcohol to ensure any wax or sealer which may have been applied has been removed before applying the Giani primer. Please note, xylene and lacquer thinner are very flammable!

Please, contact us at 800-650-5699, at info@gianigranite.com, or Live Chat us for other applications or questions. DO NOT use Giani on sinks, tubs, flooring, or shower doors/floors, as it is not designed to be submerged in water.

SURFACE PREP WORK:



Remove any latex or caulking with a box cutter. Do NOT use paintable caulk because you may experience cracking. We recommend caulking once you've completed painting all of your countertops.

Note: Clean up caulking residue with rubbing alcohol.



Use a scouring pad, such as an SOS® or Brillo® pad, to remove grease and dirt. DO NOT use any other cleaners. Rinse with water, at least twice, to remove all cleaner residue.

Note: It is NOT necessary to sand as the scouring pad will rough up the surface.



Patch any deep nicks or seams with some wood filler (Giani will cover up any thin scratches). Once dry, sand the wood patch smooth with a #600 fine grit sandpaper. Wipe up the dust with a damp cloth.

Note: Giani does not level or smooth out any pre-existing textured surfaces.



Use FrogTape® Painter's Tape to prevent paint bleed through. Apply at least two rows of tape above the backsplash.

Note: Cover up your cabinets to prevent spills.

Step 1: Roll On Primer



Note: Not all cans are filled to the top because specific volumes are used to complete the correct coverage amount and we package in standardized can sizes. For example, a mineral color may be filled specifically to 6 oz. but we package in standard 8 oz. can.

After shaking the primer can well, use the foam brush to paint a narrow, 1/2" wide strip of primer at the bottom and top of your backsplash in small, 2-foot wide sections. Next, working in small 2-foot sections, use the roller to apply a thin coat of primer starting with the backsplash and working your way to the countertop surface.



Move onto the next 2-foot section, so the two sections blend while they are both still wet and repeat until the entire countertop is covered. Make sure to work quickly so as not to create lap lines.

Wait 8 hours for the primer to dry before starting on Step 2. Clean your foam brush for re-use and dispose of the roller cover. After you are done, if you go back and notice a spot that you missed, first allow the countertops to dry for an hour before touching it up with the foam brush. Let dry for a couple hours before applying your mineral colors.

Step 2: Sponge On Minerals



RECOMMENDED: Practice the Mineral application on the Kit's Black Practice Sheet (or on a regular sheet of black construction paper to mimic the black primer) before painting on your countertops.

Cut the sponge in half, then cut each half piece in half, giving you 4 pieces. Pour small amounts of each Mineral color onto its own paper plate. Pick off any loose bits of sponge, before dipping it in the Minerals, to prevent debris in your application. Dip the textured side of the sponge into Mineral No. 2a and dab off the excess on a clean paper plate. **WORKING IN SMALL 2x2 FOOT SECTIONS**, dab Mineral No. 2a lightly onto your counter creating a nice imprint of the sponge. If you get a "paint blob," you are pushing down too hard. Let some of the black primer show through underneath, but be sure to have each imprint overlap one another. While Mineral No. 2a is still wet, use another piece of sponge to apply No. 2b overtop of No. 2a, following the same overlapping application. Repeat again with No. 2c. Move onto the 2x2 foot section right next to the section you just completed, following the same application technique as above, overlapping and blending as you sponge. **Note:** DO NOT apply one Mineral at a time over the entire countertop and allow each color to dry before applying the next Mineral. The Minerals blend better when they are applied together, while wet, and in small sections. **Don't forget to sponge the backsplash as you finish each 2x2 foot section.** **TIP: Use an artist brush to get into the creases of the backsplash.** **And/or, you can cut and attach a piece of sponge to the end of a pencil.** Watch the application video for the backsplash at www.gianigranite.com. Let dry for 4 hours. Sand down any peaks with a #600 fine grit sandpaper, if needed. Wipe up the dust with a damp cloth. Once dry, apply the clear protective topcoat. **TIP:** Once you've completed Step 2 on all of your countertops, take a step back and see if any adjustments need to be made. You may go back in and add more colors even after it has dried!



CHOCOLATE BROWN & SLATE TIPS: While working in 2x2 foot sections, and immediately after No. 2c has been applied, use the 4th piece of sponge to dry sponge and blend the colors. *For Chocolate Brown*, tap very lightly over the section to knock down and blend some of the red showing through in the brown. *For Slate*, push down with more pressure to blend all three colors together. This is a personal preference, as some may like it more blended than others.

Watch How-To Videos
for each Kit at:
www.gianigranite.com

READ FAQ'S AT:
Visit gianigranite.com
and select the "FAQS" tab
on the top menu bar.

BOMBAY BLACK TIP: Be sure to stir your Pearl Mica and Bronze Minerals well, because their metallic flecks may settle. You may use a plastic grocery bag, by scrunching it up, in place of a sponge to apply the Pearl Mica and Bronze Minerals. This creates natural looking veins in the granite. Apply the Bronze sparingly, as a little goes a long way.

WHITE DIAMOND TIP: For a brighter look, repeat an additional one to two layers of No. 2c. It is recommended to wait until your countertops are dry to the touch before adding any additional layers.

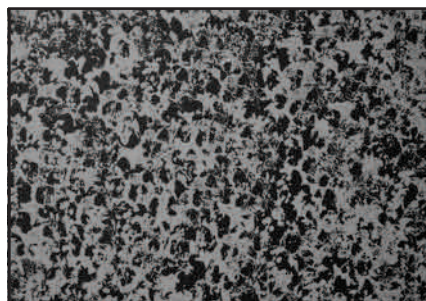
A GUIDE TO LAYERED SPONGING:

For best results, follow this guide for each Mineral color application.

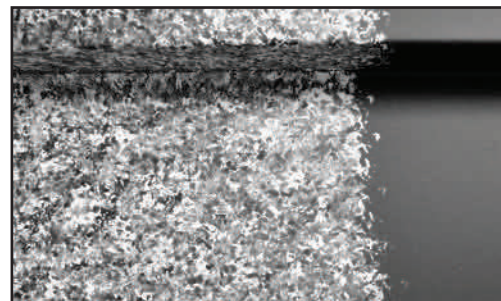
Should NOT Look like This:



Should Look like This:



Final Look of Each 2X2 Section:



Step 3: Roll On Clear Topcoat



APPLICATION NOTE: TOPCOAT ROLLS ON WITH A BLuish TINT. DRIES CLEAR.

Use the Kit's foam brush and apply a narrow strip of topcoat, to the top and bottom of your backsplash in a section that is about 2 feet wide (following the same process as in Step 1). Next, use the Kit's second roller pad and apply a THIN coat of the topcoat to the backsplash in the same section. **Note:** Don't push the roller cover onto the roller arm too far because it may affect its ability to roll easily.

Next, working with the same small 2-foot section, use the roller to apply a thin layer of topcoat to the countertop surface. Then, go back over that section again with long, even, overlapping strokes, starting from the backsplash crease (back rolling) towards yourself. This will eliminate lap lines and create a smooth finish. **DO NOT** overwork the area otherwise you may get a textured, tacky surface.

Quickly move onto the next 2-foot section, blending while still wet and repeat until the entire countertop is covered. Be sure to not create lap lines by pushing too hard while rolling. If you missed a spot, don't worry, you will get it on your next coat. Don't try to re-roll that area, as you will create a tacky surface that will have texture on it once dry. Repeat the process with each adjoining section until the entire countertop is covered. Clean the roller cover with warm water and let dry. *Continued on Page 3.*

TOPCOAT CONTINUED: Wait 4 hours before applying the second coat. There is no need to sand between coats unless it is not completely smooth. Once dry, run your hand over the surface to make sure that there is no texture. If there is, lightly sand with a #600 grit sandpaper and clean up with a damp cloth. Make sure the surface is completely dry and dust free before applying the second coat.

After your final layer of topcoat (recommended to apply 2, max of 3 coats), wait 1 hour before removing tape. Remove tape by scoring the edge with a blade and slowly pulling upwards. Wait 12 hours before applying clear acrylic caulk around your sink's rim.

WHEN CAN I USE MY COUNTERTOPS AGAIN?

Wait 24 hours after the final topcoat layer before using your countertops and dishwasher. After 3 days, you may set light appliances back on your counters (such as a toaster, cutting board, knife holder), but it is recommended to wait the full cure time of 14 days before placing heavier appliances back on your counters.

The full cure time is 14 days. While you can clean and use your countertops gently during this time, we do not recommend cleaning aggressively until after the cure time. Once Giani has fully cured, it is safe for incidental food contact.



DRYING TIMES:

Step 1: Roll On 8 Hours

Step 2: Sponge On 4 Hours

Step 3: Roll On 4 Hours

CARE & MAINTENANCE:

Only use mild dish soap and water or the Giani Cleaner. Never use harsh chemicals such as bleach, household cleaners, disinfectant wipes, or any abrasives such as Comet® or Soft Scrub®. Even diluted solutions of a cleaner and water will wear down the durability of the topcoat over time. Never use harsh natural cleaners such as vinegar, rubbing alcohol, hand sanitizers, air freshener oils, or essential oils. Also, be cautious with juice, wine, coffee, etc. as they can leave a stain on your topcoat if they are not cleaned up right away. Just like granite and Formica, it is not recommended to cut or chop directly on Giani. You'll want to use a cutting board or silicone mat for any food preparation. Although Giani is heat resistant up to 250° F, we recommend always using a hot pad or trivet for items directly from the stove or oven. Never use scratch pads. With the proper care, Giani will last as long as any conventional countertop. The difference is, if it is ever necessary, you can renew Giani quickly and easily. **For touch-up instructions: check out our FAQs under the "How Do I Care for My Countertops?" tab.**

As the Giani topcoat is water-based, avoid standing water or trapped water under a dish for long periods. If you notice water, wipe it up immediately with a dry towel. If water has been trapped under a cup overnight and the surface has started to discolor, remove the cup and let the counter dry fully before touching the area. The topcoat will be in a weakened state and may easily scratch during this time. If allowed to fully dry, it will return to its original hardness and all cloudiness will go back to looking like your original surface. If food gets stuck on it, lay a warm, wet cloth over the food for a few minutes and remove with the cloth. **Please note: Even if you follow the application instructions to a T, your Giani may show signs of wear if you don't follow these proper care instructions.**

Over time, if you ever wish to add additional reinforcement to your Giani you may apply a fresh layer of clear topcoat over your entire Giani countertops. First, use a very fine grit #600 sandpaper and lightly de-gloss your existing topcoat. You don't have to remove your existing topcoat. Lightly sand it to knock down its gloss and smooth it out. Next, use a damp cloth to wipe up the sanding dust and allow it to dry before adding additional topcoat. Remember, after the reinforcement topcoat has been applied, your countertops will need to cure again. **TIP:** If you are looking for some extra sparkle to add to your Giani countertops, apply our Glitter Topcoat on top of the standard Acrylic Topcoat at any point after it has fully cured. **TIP:** For additional protection, apply Giani's 2-Part Epoxy after your topcoat has cured for 14 days. **You can find these products in the "Giani Countertop Paint" section under the "Shop" menu tab at gianigranite.com.**

Cold Weather Alert!!! Important! Due to lower outside temperatures during the winter, the temperature of your countertop is likely to be cooler than your room because of the unheated cabinet space below and their attachment to outside walls. Colder countertop temperatures will slow down the drying times, which may adversely impact the coating. Therefore, it is important to increase your countertop's temperature with the following steps:

1. Make sure your Giani™ kit is inside your home for at least 48 hours before your start your project.
2. Turn your heat up to 72°F the night before you start your project - and until you apply your last coat.
3. Open your cabinet doors to allow the heat in underneath your countertops the night before you begin. Apply at 70° - 85°F.



KEEP FROM FREEZING. If frozen, let thaw. During the winter months, paint is at risk for freezing due to the cold temperatures it may be exposed to during warehouse storage and delivery. Frozen paint can sometimes be tricky to determine initially because your cans won't feel cold to the touch - however, the paint will exhibit a grainy/slushy texture. But not to worry, the paint will completely recover! **We recommend allowing your paint to recover at room temperature for one week before applying. DO NOT apply the paint if it appears clumpy or frozen.**

Important! Giani Granite cures in 14 days at 77°F and 50% relative humidity. You may fully use your countertops one day after you have completed your application. Simply minimize aggressive cleaning for the first 14 days. Avoid leaving trapped water on your countertops over night, such as, under a washcloth, cutting board, coffee pot, or dish rack. If this occurs, the liquid may react with the topcoat, creating a temporary texture, which will totally disappear and fully recover in approximately six hours, if left untouched. **Keep alcohol based products off your topcoat because they will affect its performance. KEEP FROM FREEZING.** If frozen, let thaw for 48 hours.

DISPOSAL: Clean equipment and paint spatters with warm, soapy water. Dispose of contaminated absorbent container and unused product in accordance with all current federal, state, and local regulations. Use only with adequate ventilation. See enclosed pamphlet on the proper ventilation. **CAUTION:** Do not take internally. Avoid contact with eyes and skin. Use with adequate ventilation. **KEEP OUT OF REACH OF CHILDREN.**

WARNING! Irritant! Harmful, if swallowed. Contains Propylene Glycol. Avoid contact with eyes. May cause eye, nose, and throat irritation. Avoid breathing of dust and vapors or spray mist. Open windows and doors or use other means to ensure fresh air entry during application and drying. If you experience eye watering, headache, or dizziness, leave the area to obtain fresh air. If continued difficulty is experienced, seek medical attention immediately. Close container after each use. Wash thoroughly after handling and before smoking and eating. **FIRST AID:** If swallowed, do not induce vomiting. Get medical attention immediately. If you experience difficulty in breathing, leave the area to obtain fresh air. If continued difficulty is experienced, seek medical attention immediately. In case of eye contact, flush eyes immediately with plenty of water for at least 15 minutes and seek medical attention.



GIANI, Inc. 2216 N. Broadway, St. Louis, MO 63102

www.gianigranite.com // info@gianigranite.com

800-650-5699 // +1 314-241-3500 // International Emergency: +49 69-2222-5285